

# EICKVIEW OTO DIGITAL VIDEO OTOSCOPE

USER MANUAL



Item no. 300130

TELEPHONE +49 7461 96 580 0  
[www.eickemeyer.com](http://www.eickemeyer.com)

veterinary technology for life  
**Eickemeyer**®



## Contents

1. Device Information .....	5
1.1. General Description .....	5
1.2. Intended Purpose.....	5
1.3. Intended User.....	5
1.4. Intended Patient.....	5
1.5. Contraindications.....	5
1.6. Working Principle.....	5
2. Safety Information .....	6
3. Symbol Description.....	7
4. Introduction .....	8
4.1. Features.....	8
4.2. Specifications .....	8
5. Product Overview .....	10
5.1. Package Content.....	10
5.2. Product Setup.....	11
5.3. Operational Interface .....	12
6. Operations .....	13
6.1. Basic Operations.....	13
6.2. Connectivity .....	13
6.2.1. Mobile App Connection.....	13
6.2.2. Wi-Fi Connection .....	14
6.2.3. File Transfer .....	15
6.2.4. Image/Video Data Export .....	15
6.3. Battery Charging.....	16
7. Safety Warnings.....	17
7.1. Brightness Setting .....	17
7.2. Operating Temperature .....	17
8. Troubleshooting .....	18



# 1. Device Information

## 1.1. General Description

The EickView OTO is an active, invasive, and non-sterile device. This battery-powered, digital, hand-held device features Wi-Fi functionality and is compatible with mobile apps for both iOS and Android platforms. The high-definition camera is equipped with six LED lights, enabling the display of photos or videos on the mobile app.

## 1.2. Intended Purpose

The EickView OTO is designed for examining the external ear canal and tympanic membrane of animal patients. It can also be used for general illumination of the oral and nasal cavities, as well as for image capture.

## 1.3. Intended User

Veterinarians and other related professionals

## 1.4. Intended Patient

Adult patients

## 1.5. Contraindications

No contraindications

## 1.6. Working Principle

The EickView OTO is equipped with a high-resolution camera at the front of the lens. When inserted into the ear canal, the camera captures images of the ear canal, eardrum, and any potential abnormalities. The built-in LED lighting system illuminates the ear canal, ensuring high-quality image capture. These images can be transmitted to a smartphone display in real time, either via wired or wireless connection, and can be viewed and analyzed using the dedicated app.

## 2. Safety Information

### **Warning: Fire and Explosion Hazard**

Do not operate the device in the presence of a flammable anesthetic mixture with air, oxygen, or nitrous oxide, in oxygen-enriched environments, or in any potentially explosive atmosphere.

### **Warning: Risk of Injury to Animal Patients and Operators**

Use only compatible accessories approved by the manufacturer and follow the instructions for use exactly as provided. Connect only the components specified for the device system. Failure to do so may compromise patient and operator safety, reduce product performance and accuracy, and void the warranty.

### **Warning: Risk of Animal Patient Injury**

Do not shine the otoscope into the patient's eyes, as it may cause eye injury.

### **Warning: Risk of Animal Patient Injury**

Do not use the otoscope without attaching a speculum, as this may cause ear injury or cross-contamination.

### **Warning: Risk of Cross-Contamination**

The speculum is reusable. Cleaning and disinfection are required before and after each use to prevent the spread of contamination between patients.

### **Warning:**

Do not use the otoscope in an MRI environment.













Do not use this otoscope to examine the eyes.

### **Caution:**

The otoscope is a diagnostic tool and should be used by a qualified veterinarian in appropriate contexts. If there is any diagnostic uncertainty, a comprehensive evaluation using additional diagnostic methods is recommended.

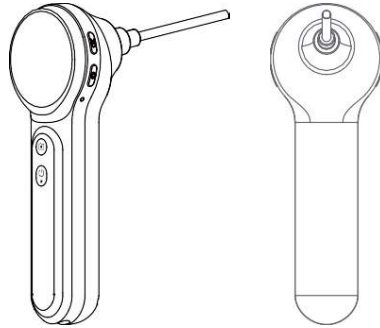
If the patient exhibits symptoms such as abnormal ear canal discharge, bleeding, fever, tinnitus, or severe earache, further diagnosis and treatment are recommended.

### 3. Symbol Description

Graphical symbols	Description
	Manufacturer
	Please read the user manual before use.
	CE mark: indicates that the device complies with the EU 2017/745
	Date of manufacture
	Serial number
	Temperature limit
	Humidity limitation
	Atmospheric pressure limitation
 	ENVIRONMENT PROTECTION - Waste electrical products should not be disposed of with household waste. Please recycle where facilities exist. Check with your local authority or retailer for recycling advice
	Recycling
	Unique device identifier

## 4. Introduction

The EickView OTO is an easy-to-use, handheld smart video otoscope designed for capturing images and videos of the ear and other body parts. With interchangeable accessories, it can also be used to capture images and videos of other natural cavities.



### 4.1. Features

- 1.85-inch high-definition screen with 360x360 resolution
- Detachable lens and accessories for easy assembly and storage
- One-touch photo and video capture
- TYPE-C charging and data transfer support
- Wi-Fi-enabled app operation, with live video streaming capability

### 4.2. Specifications

Monitor	Screen type	1.85-inch IPS LCD
	Screen	360x360
	Image Resolution	720x720
	Video Resolution	720x720
	Screen Material	Tempered Glass
	Port	Type C
	Lightness Adjustment	Bright, Medium Bright, Slightly Bright, off
	Magnification	1.0 ~ 1.5x



Camera	Diameter of Camera Lens	3.9 mm
	Megapixel	1 MegaPixel
	Field of View	78°
	Focal Length	10-50 mm
	Camera Lights	6 LED lights
	Surface and Water Resistance	Free of pores, cracks, and remainders of tooling agents. The inside can withstand a positive pressure of 22kPa for more than 1 minute without air leakage.

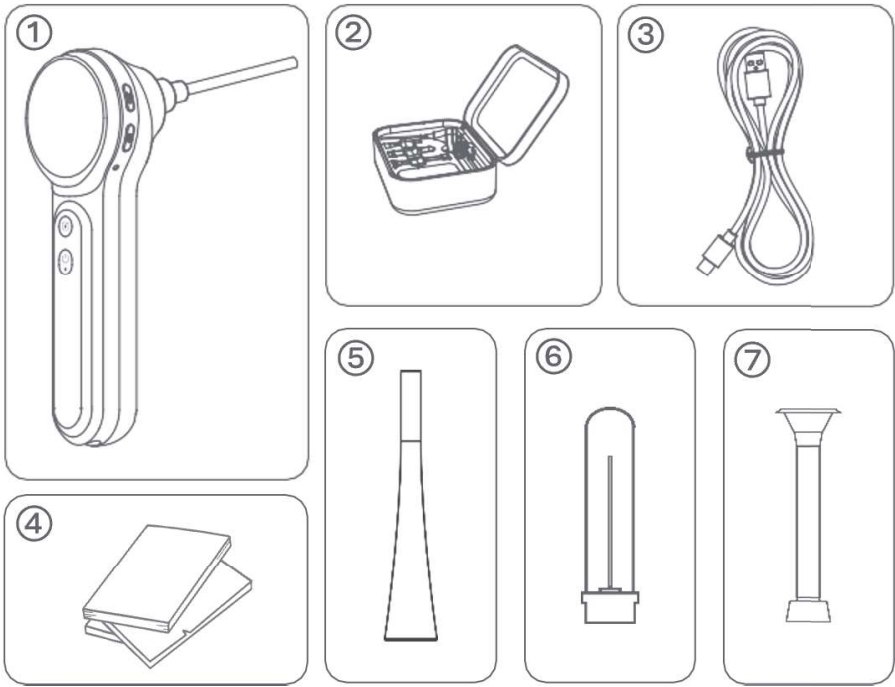
Others	Working Voltage	3.7 V
	Charging Voltage	DC 5 V
	Storage Capacity	Built-in 8 GB Memory
	Battery Capacity	380 mAh Lithium Polymer Battery
	Video Format	AVI

Network	Image and Video Display	App, Wi-Fi
	Network standard	IEEE802.11b/g/n
	Antenna	Built-in IPEX
	Operating Frequency	2.4 GHz
	Data Rate	802.11.a/b/g/n

Working Condition	Temperature: 0 ~ 45 °C (32~113 °F)
Transportation and Storage Condition	Temperature: 20 ~ 50 °C
	Humidity: 15 ~ 95 %
	Atmospheric Pressure: 50 ~ 106 kPa
Service Life	5 Years

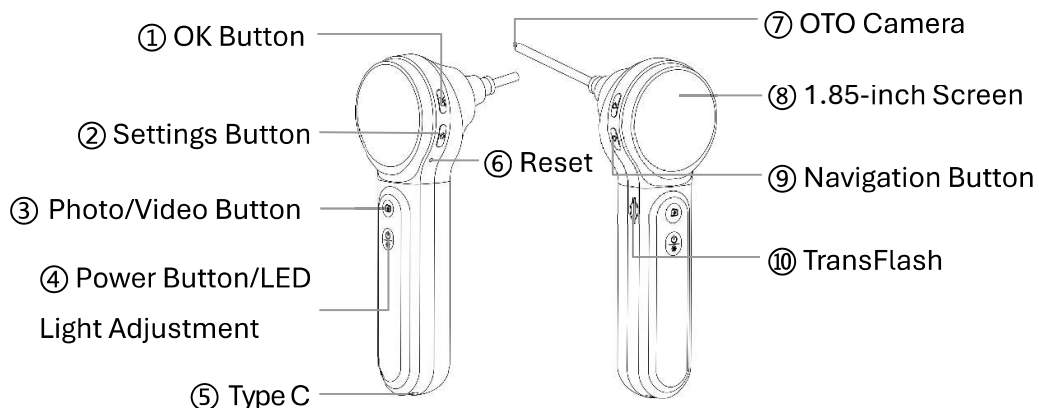
# 5.Product Overview

## 5.1. Package Content



①	EickView OTO
②	Transport Case
③	USB Cable
④	User Manual
⑤	Ear Protection Sheath
⑥	Tongue Depressor
⑦	Skin Observation Sleeve

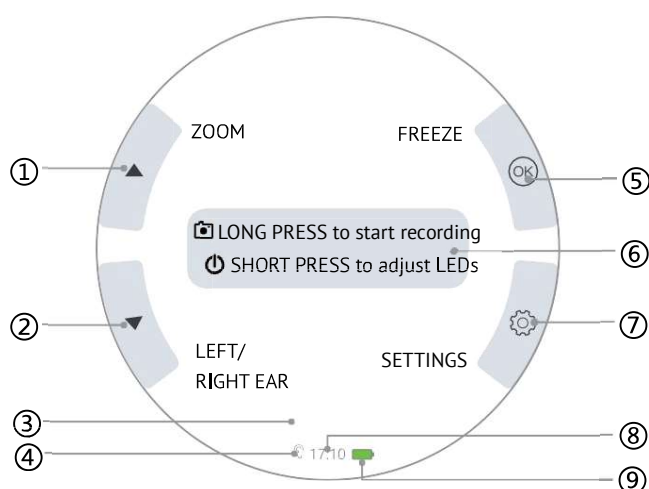
## 5.2. Product Setup



### Control Button Description

▲	Press to scroll upwards in the menu Zoom 1.0 ~ 1.5 x
▼	Press to scroll downwards in the menu
ok	Left/Right Ear Switch Play/Pause in Photo/Video mode LONG PRESS: Enter/Exit Album
⚙️	SHORT PRESS: Enter Device Settings/Delete Image or Video in Album LONG PRESS: Turn On/Off WiFi
📷	Home Page Status SHORT PRESS: Take a Photo LONG PRESS: Start/End a Video Recording Non-Home Page Status SHORT PRESS: Back to Home Page
🔌	SHORT PRESS: Adjust the Camera Lights By default the lowest brightness level is used when turning on the device. When looking at ears, be sure to use the lowest brightness level to avoid burning ears. LONG PRESS: Power On/Off
○	Reset SHORT PRESS to reboot the system

### 5.3. Operational Interface



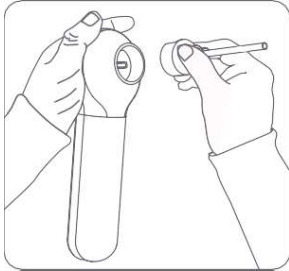
①	Up
②	Down
③	Date
④	Left/Right Ear
⑤	OK Button
⑥	Button Description
⑦	Settings Button
⑧	Time
⑨	Battery Status



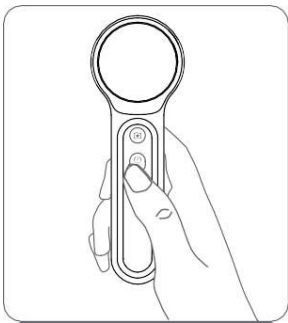
Settings	Description
Playback	View captured photos and videos
Language	Supports English, German, French, Italian, Spanish, Russian, Japanese, Chinese
Wi-Fi	Turn on/off Wi-Fi
Date Stamp	Turn on/off the date stamp
Date/Time	Setting the date and time
Format	Formatting the files stored on the TF card. (Note: Formatting will delete all files on the TF card.)
Auto Power Off	Close – 5 min – 10 min
Factory Reset	Restore all device settings to factory defaults with one click
Version	View device model and version information

## 6. Operations

### 6.1. Basic Operations



Attach the desired otoscope accessory.



LONG PRESS the power button to turn on the device.

### 6.2. Connectivity

#### 6.2.1. Mobile App Connection

- Download the JTsee app from the Apple App Store, Google Play, or Tencent MyApp for use on iOS or Android devices.
- When installing on an iPhone for the first time, a prompt will appear asking, "Allow 'JTsee' to use the camera?" Ensure you grant permission for proper functionality.



- Similarly, when opening the album for the first time, a prompt will appear asking, "Allow 'JTsee' to access photos or videos?" Be sure to grant access for full functionality.



- Enable the device's Wi-Fi by pressing and holding the settings button. Once activated, the Wi-Fi icon will flash at the bottom of the main interface (as shown below).



### 6.2.2. Wi-Fi Connection

- Open the Wi-Fi settings on your mobile device and select the wireless network option.
- Connect to the otoscope's Wi-Fi network (Network Name: Smart Otoscope\_XXXXXX).
- Enter the Wi-Fi password: 55556666 to complete the connection.



- Once connected, open the JTsee app and go to the imaging interface.

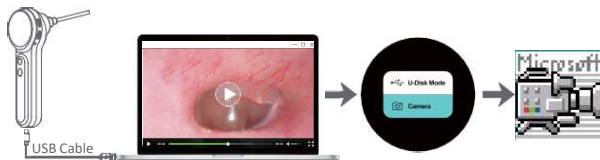


NOTE: After connecting to the app, all operations must be performed on your phone.

### 6.2.3. File Transfer

To transfer images or videos to a PC, connect the EickView OTO to the computer using the USB cable.

After connecting the device to the computer via a USB data cable, the following interface will appear on the right. Use the up and down keys to select between the two options (U-Disk Mode and Camera) and press the OK key to confirm.



Name	Description
U-Disk Mode	Selecting this option will make the device appear as a USB drive on the computer, enabling file transfer and copying.
Camera	This option enables image display on the computer (typically using image capture software, e.g., Amcap). To view the images, open the software on the computer after selecting this mode.

### 6.2.4. Image/Video Data Export

#### Device File Export Method

The device's photo and video files are stored on the memory card. When the device is powered on, connect it to the computer via a data cable to transfer the files

#### Mobile App Data Export Method

Example: Android

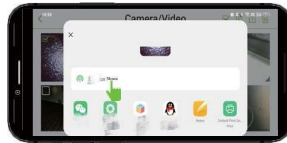
- On the app's image interface, tap Albums.



- Tap the selection icon in the top right corner.
- Select the photos/videos to export and check them in the upper left corner.
- Tap the share icon in the top right corner of the album.



- Select the desired destination path to share the files.



### 6.3. Battery Charging

Use a standard 5V/1A or 5V/2A USB power supply to charge the device. The charging connection symbol is shown below.



Charging Cable



Power On: Charging Status



Shutdown: Charging Status



## 7. Safety Warnings

### 7.1. Brightness Setting

The LED Light of this device supports high, medium, and low brightness adjustments. By default, the device starts in low-brightness mode. For ear canal examinations, it is recommended to use the default low-brightness mode throughout the process to ensure optimal detection comfort.

#### **Precautions for Brightness Adjustment**

If you need to temporarily switch to high brightness mode, please return the brightness to low after use. Allow the device to stand for 1 minute to ensure it returns to its standard working state before continuing operation.

- Keep the device away from damp or exposed environments.
- Avoid contact with sharp objects.
- Do not use alcohol, detergents, or other organic cleaning agents to clean the lens. It is recommended to use a soft cloth dampened with water.
- Do not pierce the product shell with nails or other sharp objects. Avoid hammering or stepping on the device.
- Avoid using the product near heat sources or in extreme heat conditions.
- Do not attempt to disassemble the product.

### 7.2. Operating Temperature

When removing the device from an environment with a high- or low-storage temperature, it should be allowed to acclimate to the working environment for a minimum of 30 minutes before use.

## 8. Troubleshooting

Unable to Power On	<ul style="list-style-type: none"><li>- Check if the device has power. Charge the device if needed..</li><li>- Press the reset button to perform a forced reset.</li></ul>
System Crash, Unable to Operate	<ul style="list-style-type: none"><li>- Press the reset button on the device to force a reset.</li></ul>
No Response When Charging	<ul style="list-style-type: none"><li>- Ensure the charging port is free of dirt, foreign objects, moisture, etc.</li><li>- Try unplugging and then reconnect the charging cable.</li><li>- Use a different charging cable to see if the issue persists.</li></ul>
No Response When Connected to the Computer	<ul style="list-style-type: none"><li>- Ensure the device is turned on and in USB mode when connected to the computer.</li><li>- Check that the data cable interface is free of dirt, foreign objects, moisture, etc.</li><li>- Try unplugging and reconnecting the data cable (including the computer's USB side).</li><li>- Restart the device or computer, as the USB connection may not be recognized initially.</li><li>- Try using a new data cable.</li></ul>



Eickemeyer – Medizintechnik für Tierärzte KG

Adresse: Eltastraße 8, 78532 Tuttlingen, Germany

Tel.: +49 7461 96 580 0 | E-Mail: [info@eickemeyer.de](mailto:info@eickemeyer.de)

GERMANY

EICKEMEYER KG  
Eltastraße 8  
78532 Tuttlingen  
T +49 7461 96 580 0  
info@eickemeyer.de  
www.eickemeyer.de

SWITZERLAND

EICKEMEYER AG  
Sandgrube 29  
9050 Appenzell  
T +41 71 788 23 13  
info@eickemeyer.ch  
www.eickemeyer.ch

POLAND

EICKEMEYER Sp. z o.o.  
Al. Jana Pawła II 27  
00-867 Warszawa  
T +48 22 185 55 76  
info@eickemeyer.pl  
www.eickemeyer.pl

ITALY

EICKEMEYER S.R.L.  
Via G. Verdi 8  
65015 Montesilvano (PE)  
T +39 085 935 4078  
info@eickemeyer.it  
www.eickemeyer.it

DENMARK

EICKEMEYER ApS  
Solbakken 26, Hammelev  
6500 Vojens  
T +45 7020 5019  
info@eickemeyer.dk  
www.eickemeyer.dk

NETHERLANDS

EICKEMEYER B.V.  
Doejenburg 203  
4021 HR Maurik  
T +31 345 58 9400  
info@eickemeyer.nl  
www.eickemeyer.nl

UNITED KINGDOM

EICKEMEYER Ltd.  
3 Windmill Business Village  
Brooklands Close  
Sunbury-on-Thames  
Surrey, TW16 7DY  
T +44 20 8891 2007  
info@eickemeyer.co.uk  
www.eickemeyer.co.uk

CANADA

EICKEMEYER Inc.  
617 Douro Street  
Suite 205  
Stratford, Ont. Canada  
N5A 0B5  
T +1 519 273 5558  
info@eickemeyervet.ca  
www.eickemeyercanada.ca